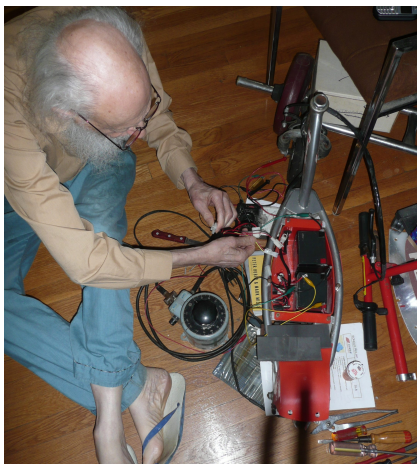


## Pictures for AGI-16 Talk on Multiple Theories

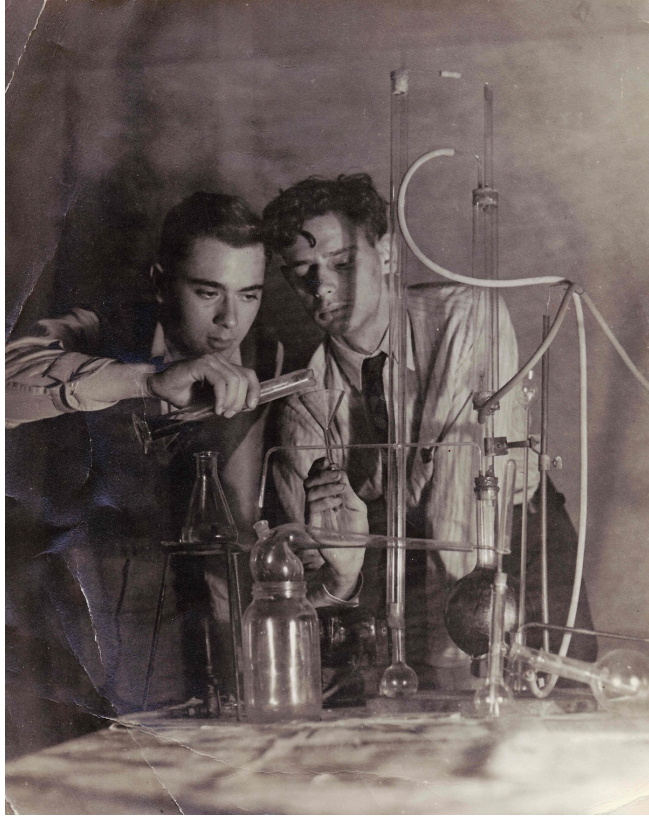
Grace Solomonoff

Oxbridge Research

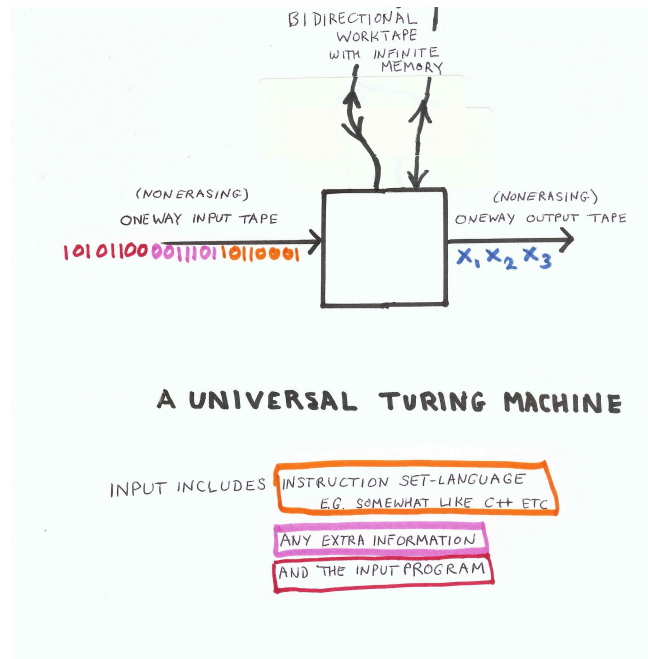
Mailing Address: P.O.B. 400404, Cambridge, Ma. 02140, U.S.A.  
prettyvivo@gmail.com <http://raysolomonoff.com>



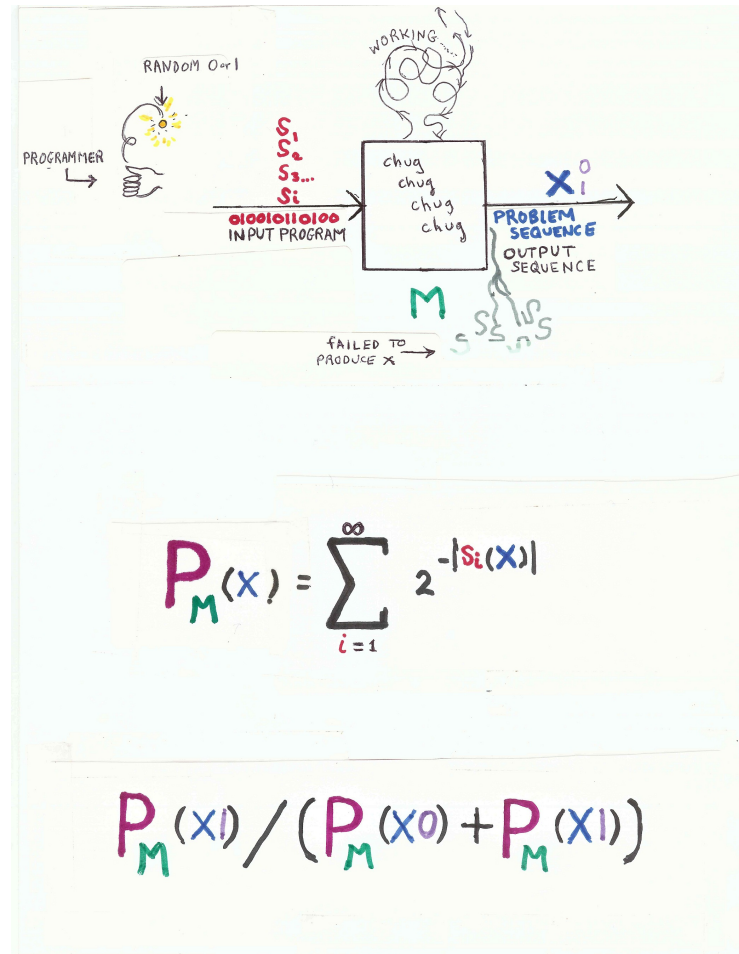
1. Ray taking apart a scooter. 2. Working on the house he built.



An “experiment” in Ray’s lab, high school years. (Ray is on the right).



A Universal Turing Machine.



Pictorial View of Ray's Inductive Inference Theory  
 Top Section: Turing Machine inputting programs that may or may not describe sequence of observations,  $X$   
 Middle Section: Algorithmic Probability adding up programs describing  $X$   
 Bottom Section: Bayes theorem giving probability of extrapolation of  $X$





Around 1960: Ray, Mary Silver, Rollo Silver, Marvin Minsky, a friend, Ed Fredkin



Science Fiction Fanzines from Ray's SciFi club, Chicago Univ, 1950



1. A Sultan in a turban. 2. Ray in a Turban 3. Mimi the cat in her house.

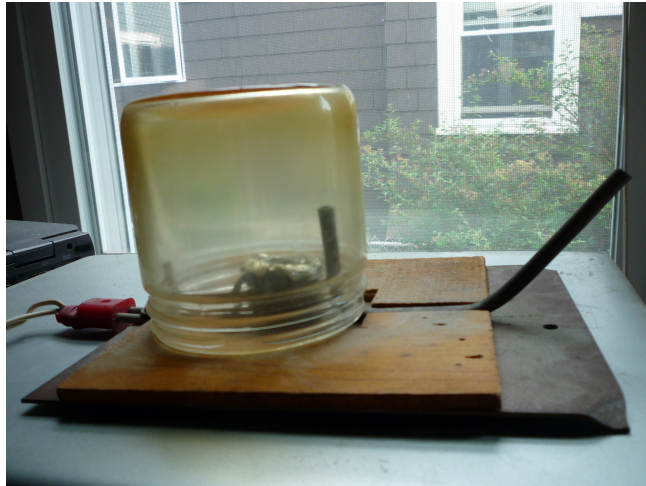


1. Poster from the 60's. 2. hippie styles, still worn in 1984.



1989 protesting Lotus attempt to patent keyboard styles.





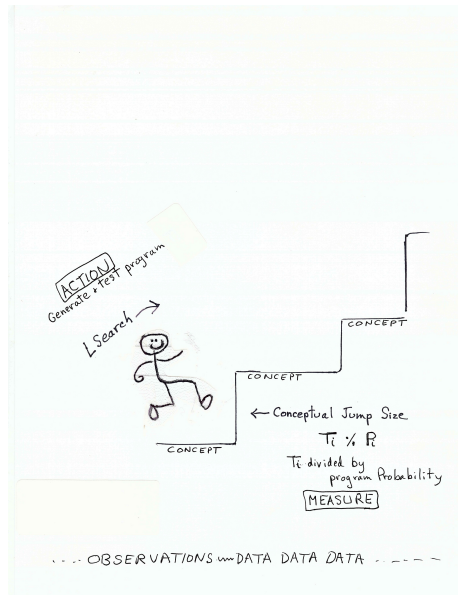
Ray's Electric Pot Smoking Machine



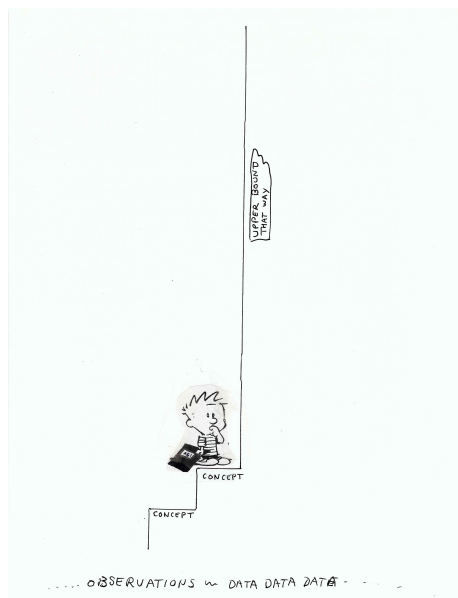
An immersion water heater (available on Amazon, around 7 dollars)



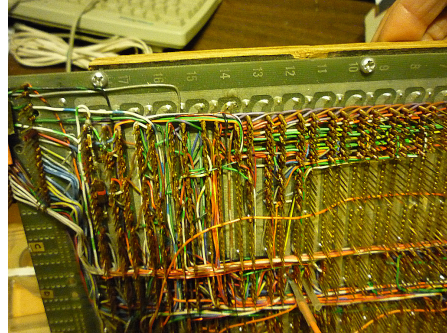
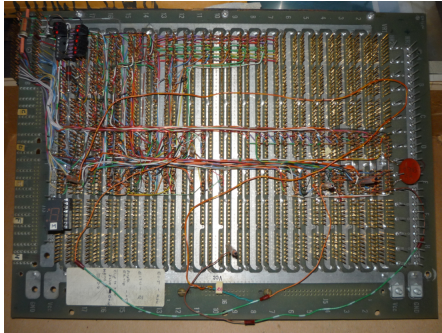
Pot Smoker showing immersion heater's new "description"



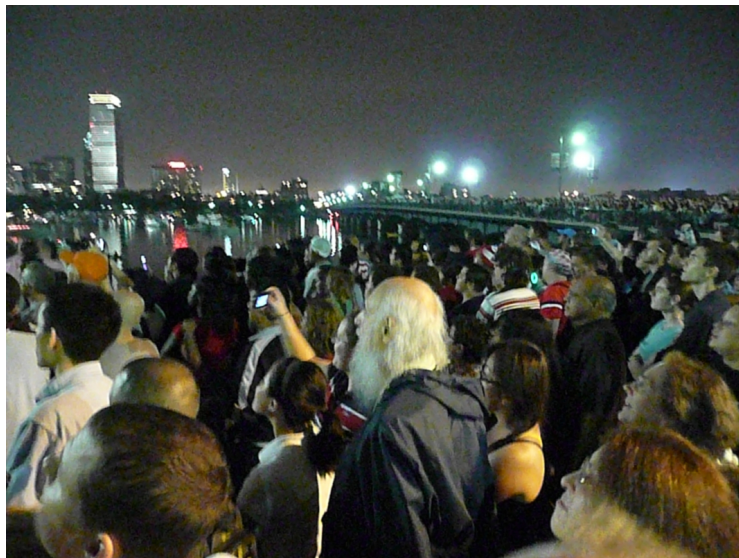
Simplified Pictorial View of Lsearch



Problem with CJS



Ray's handmade computer.



Ray looking at fireworks in the night sky